



How To Enable Wireless Access on the BEC 7300GT DSL Router

1. To enable the wireless access point on the BEC 7300GT DSL Router, your PC must be plugged into any one of the four LAN ports on the router with a Category 5 ethernet cable.
2. Open a web browser (such as Firefox or Internet Explorer) and type the following in the browser's address bar: <http://192.168.1.254> (fig. 1)



fig. 1

3. Log in to the router using the following credentials: (fig 2)

User Name: admin

Password: admin

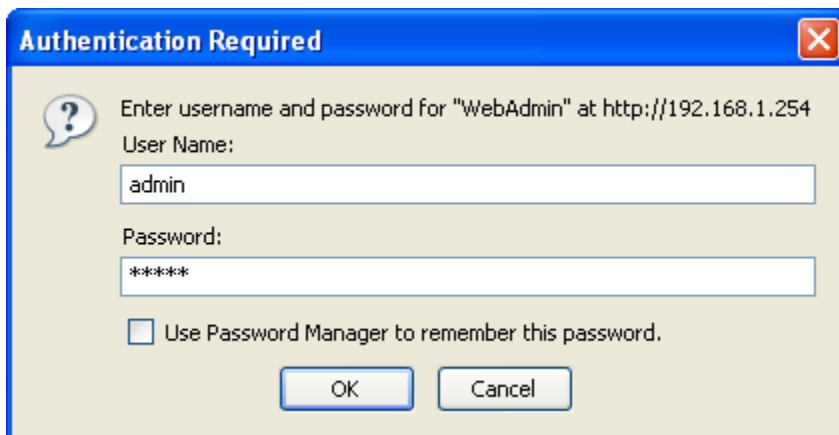


fig. 2

4. Click Configuration in the left hand menu (fig. 3)

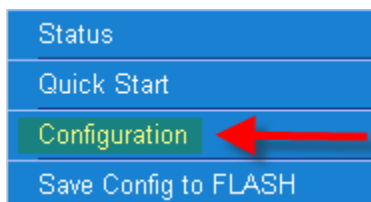


fig. 3

5. Click LAN in the left hand menu (fig. 4)

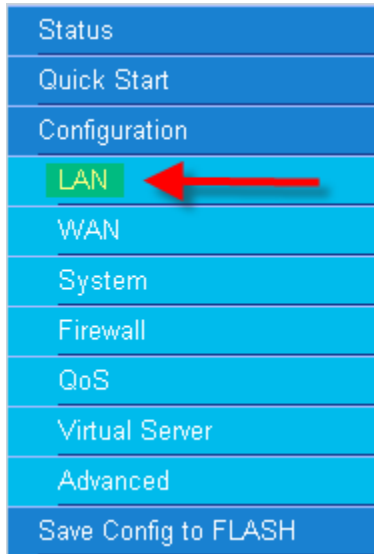


fig. 4

6. Click Wireless in the left hand menu (fig. 5)



fig. 5

7. On the Wireless configuration screen, ensure the following settings: (fig.6)
 - i. WLAN service – Enable
 - ii. Hide ESSID – Disable
 - iii. Regulation Domain – N. America
 - iv. Click Apply

Wireless	
Parameters	
WLAN service	<input checked="" type="radio"/> Enable <input type="radio"/> Disable
Mode	802.11b+g
ESSID	wlan-ap
Hide ESSID	<input type="radio"/> Enable <input checked="" type="radio"/> Disable
Regulation Domain	N.America
Channel ID	Channel 1 (2.412 GHz)
WMM (QOS)	<input checked="" type="radio"/> Enable <input type="radio"/> Disable
WMM-APSD	<input type="radio"/> Enable <input checked="" type="radio"/> Disable
MAC Address	00:19:DB:0E:96:03
AP Version	RT2561T 1.0.8.0-3
Wireless Distribution System (WDS)	
WDS Service	<input type="radio"/> Enable <input checked="" type="radio"/> Disable
1. Peer WDS MAC Address	
2. Peer WDS MAC Address	
3. Peer WDS MAC Address	
4. Peer WDS MAC Address	
** WDS depends on the settings of main security encryption type. **	
Apply	Cancel

Fig. 6

8. Once you have made and verified your changes click the Save Config button at the bottom of the page. (fig 7)

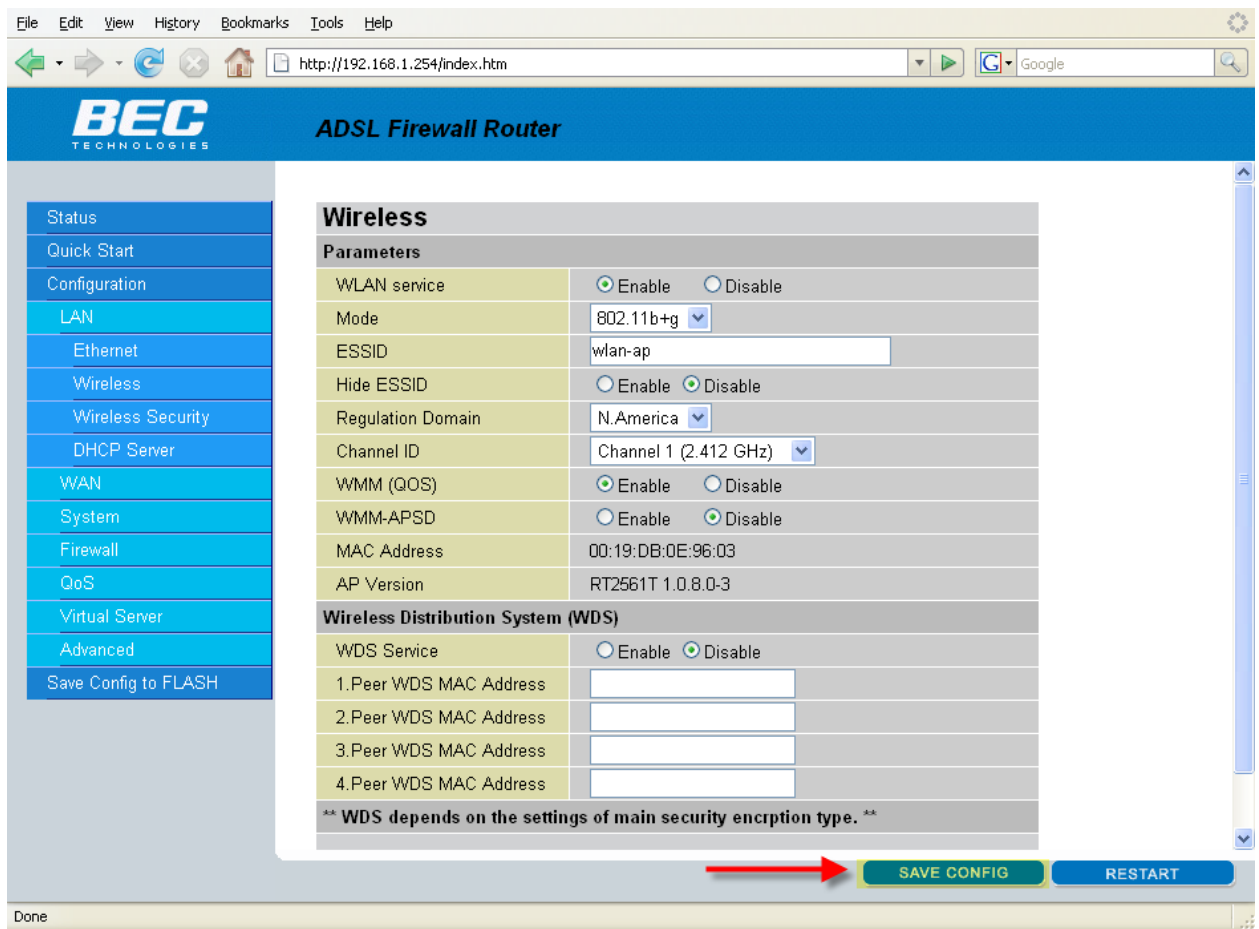


Fig. 7

9. Click Apply to write your new settings to flash (fig. 8)

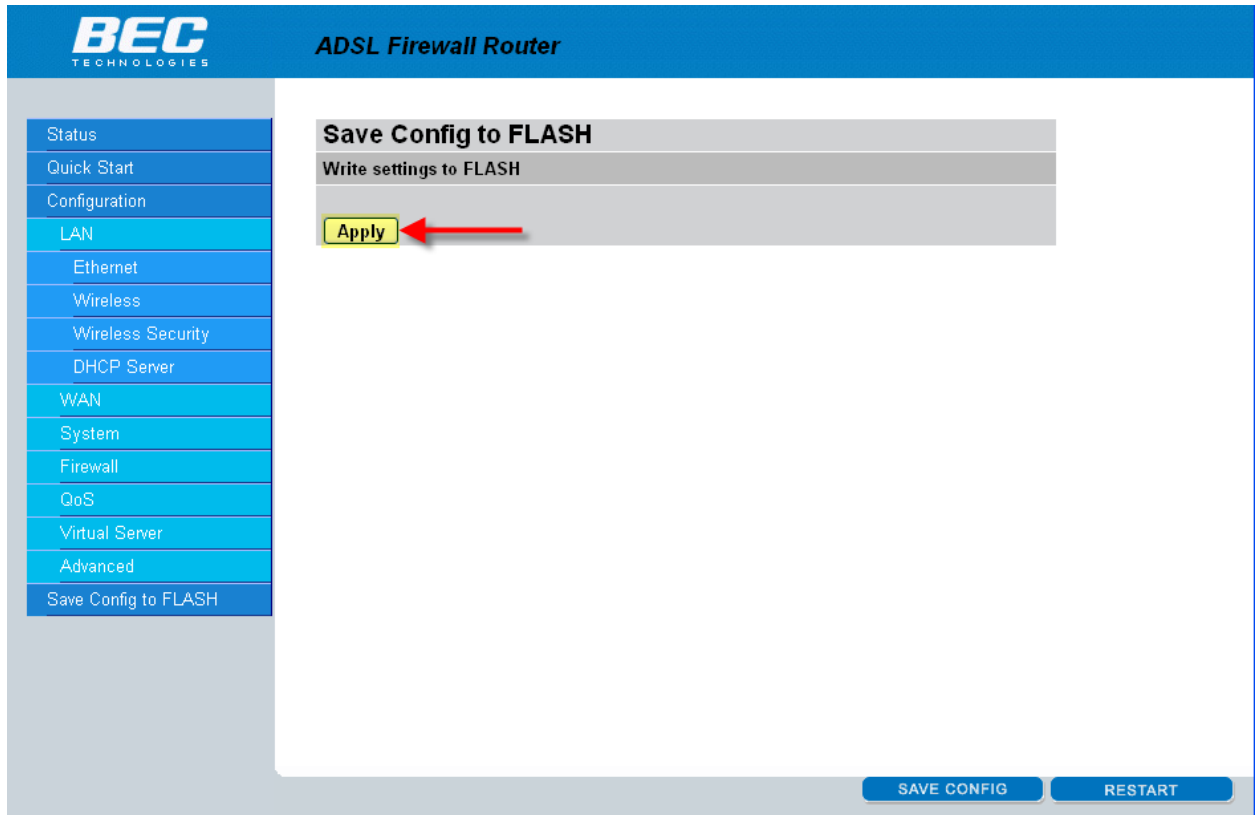


Fig. 8

After the modem writes the settings to flash, it will refresh automatically back to the main screen. The wireless access point is now enabled.

Wireless Security

The BEC 7300GT has the ability to offer wireless security such as WEP or WPA, ACT does NOT enable or support wireless encryption for your Local Area Network. If you would like or require this added functionality please reference the user's manual located on our web site.